

Courtesy Of Justin W Holubitsky Of RE/MAX Elite

# \$569,900 - 265 Cornwall Road, Sherwood Park

MLS® #E4451176

**\$569,900**

4 Bedroom, 3.50 Bathroom, 1,706 sqft  
Single Family on 0.00 Acres

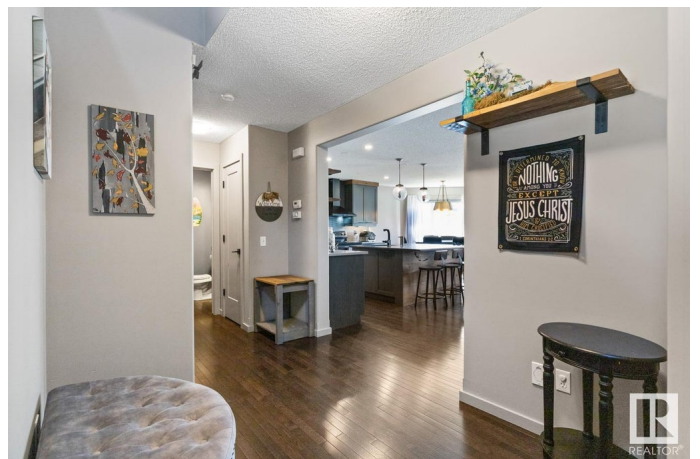
Lakeland Ridge, Sherwood Park, AB

Welcome to Lakeland Ridge! This updated 1706 sq ft home sits on the south side of a quiet cul-de-sac and offers a perfect blend of comfort and style. The sun-soaked main floor features a designer kitchen with quartz counters (2020), upgraded appliances, under-cabinet lighting, and a cozy stone fireplace. You'll also find new vinyl plank flooring, a 2-piece bath, and main floor laundry. Upstairs offers a large bonus room and 3 bedrooms, including a refreshed primary suite with a stunning 3-piece ensuite, walk-in closet, and sliding barn doors. The basement adds even more space with a 4th bedroom, a full bath, and a versatile flex area. Outside, enjoy the private backyard with a large deck that backs a walking path. Other upgrades: central A/C, heated garage, new shingles & hot water tank (2022), and has just been freshly painted. This one checks all the boxes

Built in 2006

## Essential Information

MLS® #	E4451176
Price	\$569,900
Bedrooms	4
Bathrooms	3.50
Full Baths	3
Half Baths	1



Square Footage	1,706
Acres	0.00
Year Built	2006
Type	Single Family
Sub-Type	Detached Single Family
Style	2 Storey
Status	Active

### **Community Information**

Address	265 Cornwall Road
Area	Sherwood Park
Subdivision	Lakeland Ridge
City	Sherwood Park
County	ALBERTA
Province	AB
Postal Code	T8H 2S9

### **Amenities**

Amenities	Air Conditioner, Deck, Detectors Smoke, See Remarks
Parking	Double Garage Attached

### **Interior**

Interior Features	ensuite bathroom
Appliances	Air Conditioning-Central, Dishwasher-Built-In, Dryer, Hood Fan, Refrigerator, Stove-Electric, Washer, Garage Heater
Heating	Forced Air-1, Natural Gas
Fireplace	Yes
Fireplaces	Brick Facing
Stories	3
Has Basement	Yes
Basement	Full, Finished

### **Exterior**

Exterior	Wood, Vinyl
Exterior Features	Cul-De-Sac, Fenced, Landscaped, Playground Nearby, Public Transportation, Recreation Use, Schools
Roof	Asphalt Shingles
Construction	Wood, Vinyl
Foundation	Concrete Perimeter

## Additional Information

Date Listed August 5th, 2025

Days on Market 27

Zoning Zone 25

DATA IS DEEMED RELIABLE BUT IS NOT GUARANTEED ACCURATE BY THE REALTORS® ASSOCIATION OF EDMONTON. COPYRIGHT 2025 BY THE REALTORS® ASSOCIATION OF EDMONTON. ALL RIGHTS RESERVED. Trademarks are owned or controlled by the Canadian Real Estate Association (CREA) and identify real estate professionals who are members of CREA (REALTOR®, REALTORS®) and/or the quality of services they provide (MLS®, Multiple Listing Service®)

Listing information last updated on September 1st, 2025 at 4:47pm MDT