

\$549,900 - 58 Flint Crescent, St. Albert

MLS® #E4450502

\$549,900

5 Bedroom, 2.50 Bathroom, 1,308 sqft
Single Family on 0.00 Acres

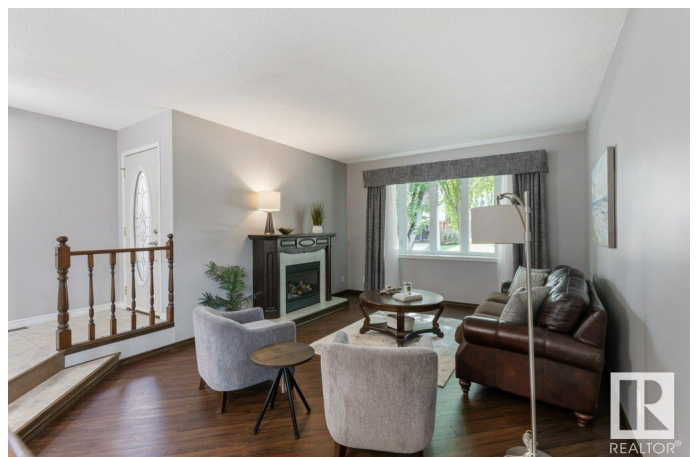
Forest Lawn (St. Albert), St. Albert, AB

Beautiful, well-maintained bungalow in the mature community of Forest Lawn. Bright and airy with abundant natural light and neutral tones throughout. Features a sunken living room with a cozy gas fireplace, spacious eat-in kitchen with ample cabinetry and counter space, and a separate dining room. The main floor includes a primary bedroom with 2-piece ensuite, two additional generous bedrooms, and a 4-piece bathroom. The fully finished basement offers two more bedrooms, an office/hobby room, 4-piece bathroom, laundry, and plenty of storage. Step outside to a backyard oasis with a large deck, custom stonework, and stunning perennial gardens backing onto Flagstone Park and Rink. The beautifully landscaped front yard complements the home's curb appeal. Double attached garage and numerous updates including Roof (2015), Fence (2022), and Eavestroughs (2024). A rare opportunity to own a spacious, updated home in a prime location!

Built in 1973

Essential Information

MLS® #	E4450502
Price	\$549,900
Bedrooms	5
Bathrooms	2.50



Full Baths	2
Half Baths	1
Square Footage	1,308
Acres	0.00
Year Built	1973
Type	Single Family
Sub-Type	Detached Single Family
Style	Bungalow
Status	Active

Community Information

Address	58 Flint Crescent
Area	St. Albert
Subdivision	Forest Lawn (St. Albert)
City	St. Albert
County	ALBERTA
Province	AB
Postal Code	T8N 1Y8

Amenities

Amenities	Deck
Parking	Double Garage Attached

Interior

Interior Features	ensuite bathroom
Appliances	Dishwasher-Built-In, Dryer, Garage Control, Garage Opener, Microwave Hood Fan, Refrigerator, Stove-Electric, Washer
Heating	Forced Air-1, Natural Gas
Fireplace	Yes
Fireplaces	Mantel
Stories	2
Has Basement	Yes
Basement	Full, Finished

Exterior

Exterior	Wood
Exterior Features	Fenced, Flat Site, Landscaped, Playground Nearby, Public Transportation, Schools, Shopping Nearby
Roof	Asphalt Shingles

Construction	Wood
Foundation	Concrete Perimeter

Additional Information

Date Listed	July 30th, 2025
Days on Market	3
Zoning	Zone 24

DATA IS DEEMED RELIABLE BUT IS NOT GUARANTEED ACCURATE BY THE REALTORS® ASSOCIATION OF EDMONTON. COPYRIGHT 2025 BY THE REALTORS® ASSOCIATION OF EDMONTON. ALL RIGHTS RESERVED.Trademarks are owned or controlled by the Canadian Real Estate Association (CREA) and identify real estate professionals who are members of CREA (REALTOR®, REALTORS®) and/or the quality of services they provide (MLS®, Multiple Listing Service®)

Listing information last updated on August 2nd, 2025 at 1:17am MDT