

\$478,500 - 1114 Moyer Drive, Sherwood Park

MLS® #E4447464

\$478,500

4 Bedroom, 1.50 Bathroom, 1,343 sqft

Single Family on 0.00 Acres

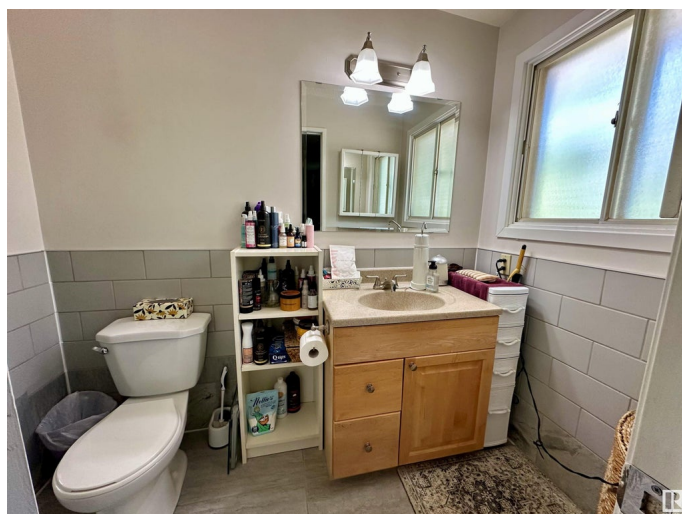
Westboro, Sherwood Park, AB

RARE FIND BACKING ONTO A PRIVATE PARK! This beautifully upgraded 1350 sq ft bungalow offers the perfect blend of privacy, space, and modern comfort. Located in a highly sought-after area with no rear neighbours ever, this is your forever home. The floor plan is functional and inviting, featuring major upgrades throughout: kitchen, updated bathrooms, windows, furnace, hot water tank, plumbing, electrical, and gleaming hardwood floors. The low-slope roof has newer shingles, NOT A FLAT ROOF. The basement is partially finished and ready for your final touches. Room to build your dream garage as well. Homes like this, with this location and this level of investment, rarely hit the market. Donâ€™t miss out.

Built in 1970

Essential Information

MLS® #	E4447464
Price	\$478,500
Bedrooms	4
Bathrooms	1.50
Full Baths	1
Half Baths	1
Square Footage	1,343
Acres	0.00



Year Built	1970
Type	Single Family
Sub-Type	Detached Single Family
Style	Bungalow
Status	Active

Community Information

Address	1114 Moyer Drive
Area	Sherwood Park
Subdivision	Westboro
City	Sherwood Park
County	ALBERTA
Province	AB
Postal Code	T8A 1E6

Amenities

Amenities	Off Street Parking, On Street Parking, Hot Water Natural Gas, No Animal Home, No Smoking Home, See Remarks
Parking	See Remarks

Interior

Interior Features	ensuite bathroom
Appliances	Refrigerator
Heating	Forced Air-1, Natural Gas
Stories	2
Has Basement	Yes
Basement	Full, Finished

Exterior

Exterior	Wood, Metal
Exterior Features	Backs Onto Park/Trees, Fruit Trees/Shrubs, Landscaped, Public Swimming Pool, Public Transportation, Schools, Shopping Nearby, Private Park Access
Roof	Roll Roofing
Construction	Wood, Metal
Foundation	Concrete Perimeter

Additional Information

Date Listed	July 12th, 2025
Zoning	Zone 25

DATA IS DEEMED RELIABLE BUT IS NOT GUARANTEED ACCURATE BY THE REALTORS® ASSOCIATION OF EDMONTON. COPYRIGHT 2025 BY THE REALTORS® ASSOCIATION OF EDMONTON. ALL RIGHTS RESERVED.Trademarks are owned or controlled by the Canadian Real Estate Association (CREA) and identify real estate professionals who are members of CREA (REALTOR®, REALTORS®) and/or the quality of services they provide (MLS®, Multiple Listing Service®)

Listing information last updated on July 12th, 2025 at 6:47pm MDT