

## \$350,000 - 1920 152 Avenue, Edmonton

MLS® #E4447405

**\$350,000**

4 Bedroom, 3.00 Bathroom, 1,214 sqft

Single Family on 0.00 Acres

Fraser, Edmonton, AB

### FLIPPERS & RENOVATORS WANTED!!!

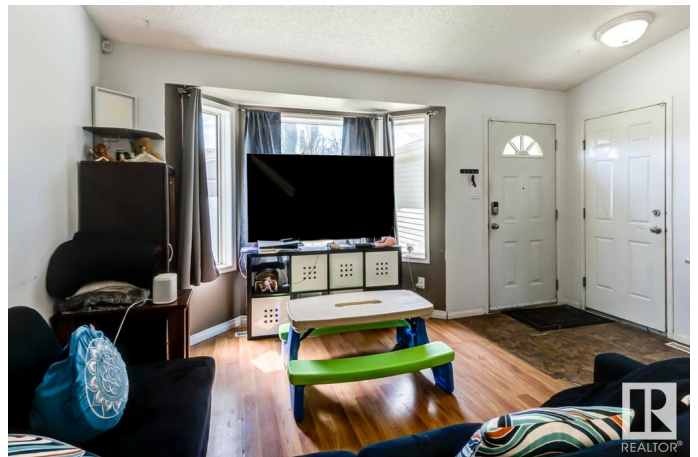
Spacious 4-bed, 3-bath split-level ideal for renovators or sweat equity handymen.

Vaulted ceilings on the main, Kitchen has sliding patio doors to a private sun deck and fully fenced yard. Upstairs offers 3 generous bedrooms, a 4-piece bath, and primary with walk-in closet and 3-piece ensuite. Third level includes a cozy fireplace in the family room, large 4th bedroom, 3-piece bath/laundry combo. Lower level has a full crawl space with tons of storage and ready for your finishing touches. Great layout with loads of potential in a quiet quality neighborhood!!

Built in 1993

### Essential Information

MLS® #	E4447405
Price	\$350,000
Bedrooms	4
Bathrooms	3.00
Full Baths	3
Square Footage	1,214
Acres	0.00
Year Built	1993
Type	Single Family
Sub-Type	Detached Single Family
Style	4 Level Split



Status Active

### Community Information

Address 1920 152 Avenue  
Area Edmonton  
Subdivision Fraser  
City Edmonton  
County ALBERTA  
Province AB  
Postal Code T5R 2R7

### Amenities

Amenities Deck  
Parking Spaces 4  
Parking Double Garage Attached

### Interior

Interior Features ensuite bathroom  
Appliances Dishwasher-Built-In, Dryer, Garage Control, Garage Opener, Refrigerator, Stove-Electric, Washer  
Heating Forced Air-1, Natural Gas  
Stories 3  
Has Basement Yes  
Basement Full, Finished

### Exterior

Exterior Wood, Vinyl  
Exterior Features Golf Nearby, Landscaped, Park/Reserve, Picnic Area, Playground Nearby, Public Swimming Pool, Public Transportation, Schools, Shopping Nearby  
Roof Asphalt Shingles  
Construction Wood, Vinyl  
Foundation Concrete Perimeter

### Additional Information

Date Listed July 11th, 2025  
Days on Market 2  
Zoning Zone 35

DATA IS DEEMED RELIABLE BUT IS NOT GUARANTEED ACCURATE BY THE REALTORS® ASSOCIATION OF EDMONTON. COPYRIGHT 2025 BY THE REALTORS® ASSOCIATION OF EDMONTON. ALL RIGHTS

RESERVED.Trademarks are owned or controlled by the Canadian Real Estate Association (CREA) and identify real estate professionals who are members of CREA (REALTOR®, REALTORS®) and/or the quality of services they provide (MLS®, Multiple Listing Service®)

Listing information last updated on July 13th, 2025 at 3:17am MDT