

## \$179,888 - 110 105 Mckenney Avenue, St. Albert

MLS® #E4447284

**\$179,888**

2 Bedroom, 1.50 Bathroom, 1,044 sqft  
Condo / Townhouse on 0.00 Acres

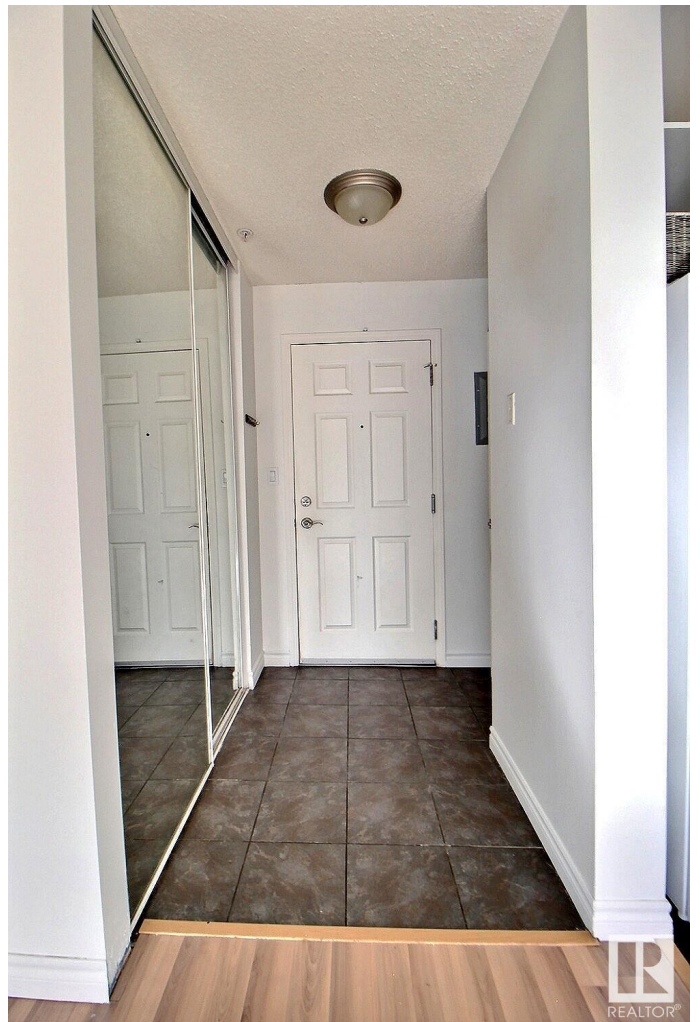
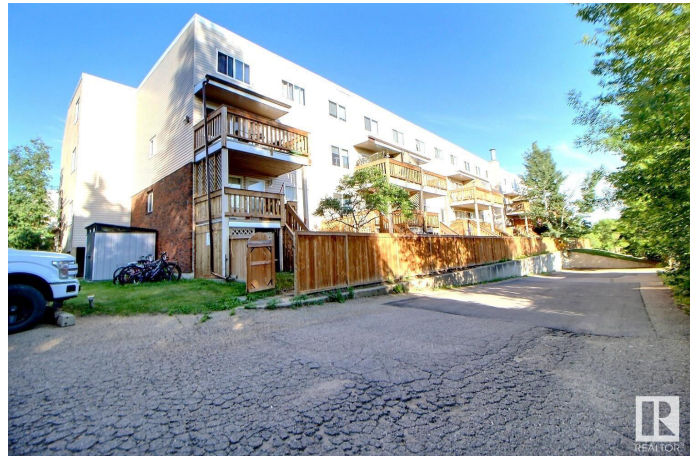
Lacombe Park, St. Albert, AB

Welcome to LACOMBE ESTATES! This incredibly spacious TWO STOREY condo offers 1,044 Sq FT of total living space with 2 bedrooms, 1 ½ bath & 2 PARKING STALLS (2nd rented). Nestled in the heart of St. Albert. Walking distance to all major amenities - restaurants, the hospital, mall, and grocery stores. This unit is tucked away at the rear of the building. Enjoy the privacy offered by the southwest exposed deck and fenced in yard. Main floor offers a modern white kitchen with BRAND NEW stove & fridge & is open to the dinette. The impressively sized living room is brightly light with large windows. Two expansively sized bedrooms are tucked away nicely on the lower level, with the primary room offer a walk-in closet. The lower level also offer a 4 pc bath, laundry and under stair storage. No lack of storage in this suite. Additional features and updated include Fresh Paint, New Ceiling Fan, Under deck storage. This unit has two entrances. Pet friendly! Move-in ready comfort in a prime location!

Built in 2006

### Essential Information

MLS® #	E4447284
Price	\$179,888
Bedrooms	2



Bathrooms	1.50
Full Baths	1
Half Baths	1
Square Footage	1,044
Acres	0.00
Year Built	2006
Type	Condo / Townhouse
Sub-Type	Lowrise Apartment
Style	2 Storey
Status	Active

### Community Information

Address	110 105 Mckenney Avenue
Area	St. Albert
Subdivision	Lacombe Park
City	St. Albert
County	ALBERTA
Province	AB
Postal Code	T8N 2Y2

### Amenities

Amenities	Deck, Parking-Visitor
Parking	2 Outdoor Stalls

### Interior

Appliances	Dishwasher-Built-In, Dryer, Fan-Ceiling, Hood Fan, Refrigerator, Stove-Electric, Washer
Heating	Baseboard, Natural Gas
# of Stories	2
Stories	2
Has Basement	Yes
Basement	Full, Finished

### Exterior

Exterior	Wood, Brick, Vinyl
Exterior Features	Fenced, Landscaped, Playground Nearby, Public Transportation, Schools, Shopping Nearby
Roof	Tar & Gravel
Construction	Wood, Brick, Vinyl

Foundation                      Concrete Perimeter

**Additional Information**

Date Listed                      July 11th, 2025  
Days on Market                2  
Zoning                              Zone 24  
Condo Fee                        \$524



DATA IS DEEMED RELIABLE BUT IS NOT GUARANTEED ACCURATE BY THE REALTORS® ASSOCIATION OF EDMONTON. COPYRIGHT 2025 BY THE REALTORS® ASSOCIATION OF EDMONTON. ALL RIGHTS RESERVED.Trademarks are owned or controlled by the Canadian Real Estate Association (CREA) and identify real estate professionals who are members of CREA (REALTOR®, REALTORS®) and/or the quality of services they provide (MLS®, Multiple Listing Service®)  
Listing information last updated on July 13th, 2025 at 5:02am MDT