

## \$998,000 - 14712 Park Drive, Edmonton

MLS® #E4446658

**\$998,000**

4 Bedroom, 3.00 Bathroom, 1,849 sqft

Single Family on 0.00 Acres

Parkview, Edmonton, AB

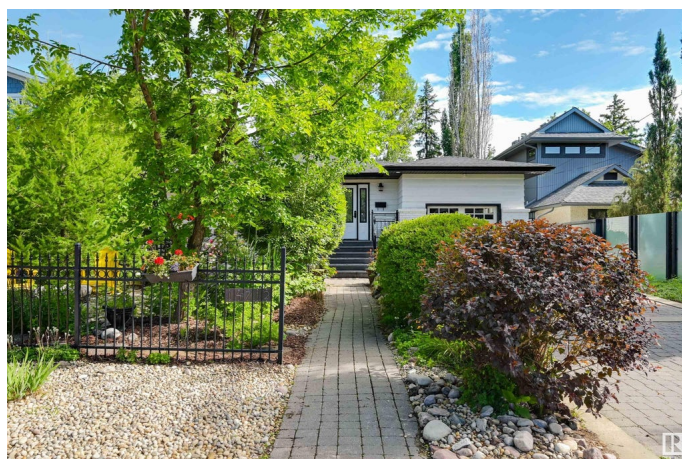
Welcome to this one-of-a-kind bungalow oasis nestled in one of Edmonton's most coveted locations, backing directly onto the ravine. Surrounded by nature, this lovingly upgraded home offers peace, privacy, and timeless style. Step inside to discover a thoughtfully designed layout featuring 2 spacious bedrooms + a den & 2 full bathrooms on the main floor. The heart of the home is the expansive great room, showcasing an open-concept chef's kitchen with high-end appliances, custom cabinetry, & an oversized island, perfect for entertaining. The adjoining dining room, bathed in natural light from skylights, & the cozy living room with a fireplace all boast breathtaking views into the ravine through massive windows that blur the line between indoors & out. Downstairs, the fully finished lower level offers endless possibilities with a large bedroom, a deluxe bathroom, a private gym, & a versatile bonus room ideal for media, hobbies, or guests. Rare opportunity to own a luxurious retreat in the heart of the city.

Built in 1957

### Essential Information

MLS® # E4446658

Price \$998,000



|                |                        |
|----------------|------------------------|
| Bedrooms       | 4                      |
| Bathrooms      | 3.00                   |
| Full Baths     | 3                      |
| Square Footage | 1,849                  |
| Acres          | 0.00                   |
| Year Built     | 1957                   |
| Type           | Single Family          |
| Sub-Type       | Detached Single Family |
| Style          | Bungalow               |
| Status         | Active                 |

### Community Information

|             |                  |
|-------------|------------------|
| Address     | 14712 Park Drive |
| Area        | Edmonton         |
| Subdivision | Parkview         |
| City        | Edmonton         |
| County      | ALBERTA          |
| Province    | AB               |
| Postal Code | T5R 5V4          |

### Amenities

|           |                        |
|-----------|------------------------|
| Amenities | Patio                  |
| Parking   | Single Garage Detached |

### Interior

|              |  |
|--------------|--|
| Appliances   | Dishwasher-Built-In, Dryer, Hood Fan, Refrigerator, Stove-Electric, Washer, Window Coverings |
| Heating      | Forced Air-1, Natural Gas  |
| Fireplace    | Yes  |
| Fireplaces   | None   |
| Stories      | 2  |
| Has Basement | Yes  |
| Basement     | Full, Finished   |

### Exterior

|                   |  |
|-------------------|--|
| Exterior          | Wood, Brick  |
| Exterior Features | Fenced, Landscaped, Park/Reserve, Ravine View, Schools, Shopping Nearby, Treed Lot |
| Roof              | Asphalt Shingles   |

|              |                    |
|--------------|--------------------|
| Construction | Wood, Brick        |
| Foundation   | Concrete Perimeter |

**Additional Information**

|                |                |
|----------------|----------------|
| Date Listed    | July 9th, 2025 |
| Days on Market | 4              |
| Zoning         | Zone 10        |

DATA IS DEEMED RELIABLE BUT IS NOT GUARANTEED ACCURATE BY THE REALTORS® ASSOCIATION OF EDMONTON. COPYRIGHT 2025 BY THE REALTORS® ASSOCIATION OF EDMONTON. ALL RIGHTS RESERVED.Trademarks are owned or controlled by the Canadian Real Estate Association (CREA) and identify real estate professionals who are members of CREA (REALTOR®, REALTORS®) and/or the quality of services they provide (MLS®, Multiple Listing Service®)

Listing information last updated on July 13th, 2025 at 3:32am MDT