

\$269,900 - 426 2045 Grantham Court, Edmonton

MLS® #E4445067

\$269,900

2 Bedroom, 1.00 Bathroom, 784 sqft

Condo / Townhouse on 0.00 Acres

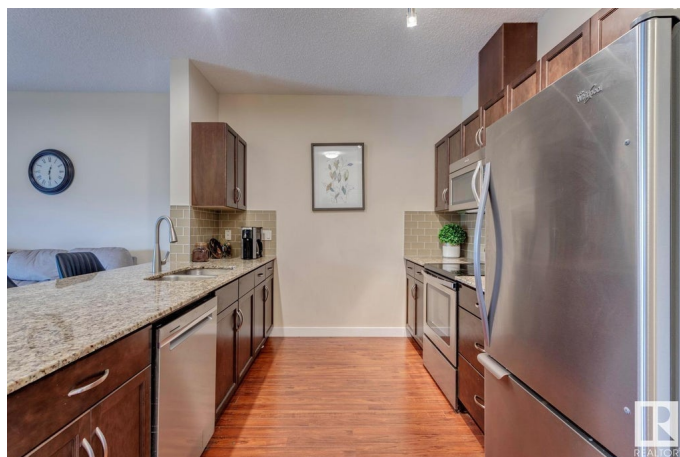
Glastonbury, Edmonton, AB

Spectacular top floor unit available in Californian Parkland! This 2 bed/1 bath unit offers an open floor plan w/9' ceilings, large kitchen w/s.s. appliances and granite counters, hardwood/tile flooring throughout, living area w/corner gas fireplace, good sized bedrooms, covered patio area, and laundry/storage area. Titled underground parking w/storage room. Well managed complex w/many useful amenities: entertainment room, fitness centre, hobby room, guest suite, car wash, and more! Located in a quiet area, close to schools, shopping, restaurants, public transportation, grocery stores and more! This is a great unit in a great complex!

Built in 2014

Essential Information

MLS® #	E4445067
Price	\$269,900
Bedrooms	2
Bathrooms	1.00
Full Baths	1
Square Footage	784
Acres	0.00
Year Built	2014
Type	Condo / Townhouse
Sub-Type	Lowrise Apartment



Style	Single Level Apartment
Status	Active

Community Information

Address	426 2045 Grantham Court
Area	Edmonton
Subdivision	Glastonbury
City	Edmonton
County	ALBERTA
Province	AB
Postal Code	T5T 3X6

Amenities

Amenities	No Animal Home, No Smoking Home, Parking-Visitor, Patio
Parking	Heated, Underground

Interior

Interior Features	ensuite bathroom
Appliances	Dishwasher-Built-In, Dryer, Garburator, Microwave Hood Fan, Refrigerator, Stove-Electric, Washer, Window Coverings
Heating	In Floor Heat System, Natural Gas
Fireplace	Yes
Fireplaces	Corner, Tile Surround
# of Stories	4
Stories	1
Has Basement	Yes
Basement	None, No Basement

Exterior

Exterior	Wood, Stone, Stucco
Exterior Features	Fenced, Flat Site, Playground Nearby, Public Transportation, Schools, Shopping Nearby
Roof	Asphalt Shingles
Construction	Wood, Stone, Stucco
Foundation	Concrete Perimeter

Additional Information

Date Listed	June 30th, 2025
Days on Market	12

Zoning	Zone 58
Condo Fee	\$464

DATA IS DEEMED RELIABLE BUT IS NOT GUARANTEED ACCURATE BY THE REALTORS® ASSOCIATION OF EDMONTON. COPYRIGHT 2025 BY THE REALTORS® ASSOCIATION OF EDMONTON. ALL RIGHTS RESERVED. Trademarks are owned or controlled by the Canadian Real Estate Association (CREA) and identify real estate professionals who are members of CREA (REALTOR®, REALTORS®) and/or the quality of services they provide (MLS®, Multiple Listing Service®)

Listing information last updated on July 12th, 2025 at 6:17pm MDT