

## \$490,000 - 3035 142 Avenue, Edmonton

MLS® #E4444410

**\$490,000**

5 Bedroom, 3.00 Bathroom, 1,325 sqft  
Single Family on 0.00 Acres

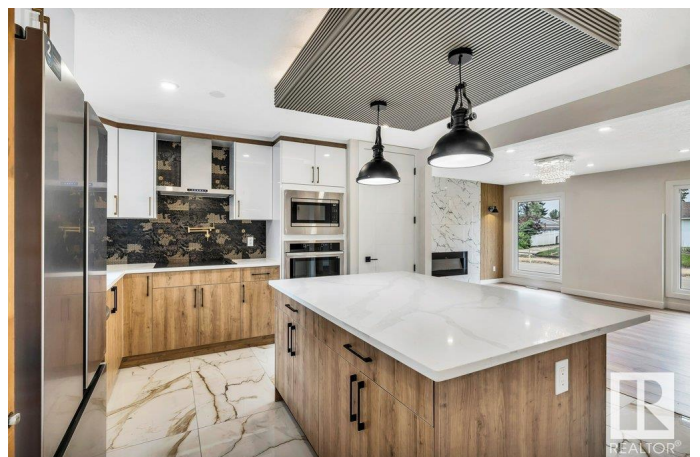
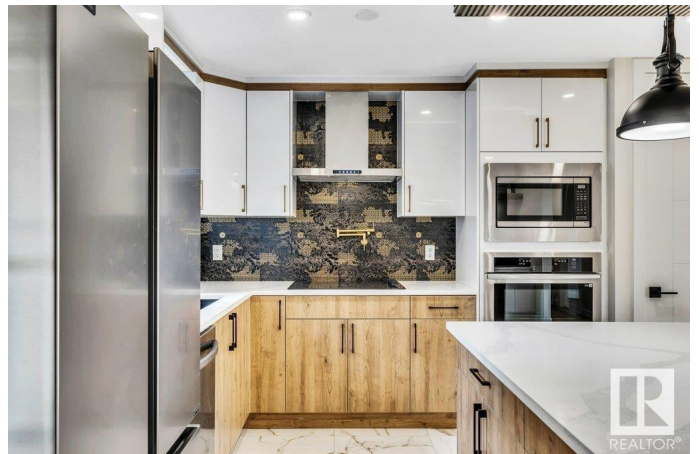
Hairsine, Edmonton, AB

Welcome to this beautifully RENOVATED 1325 sq ft bungalow in family friendly Hairsine featuring a basement suite with SEPARATE ENTRANCE. The main floor offers 3 bedrooms, 2 full baths (primary bedroom has EN SUITE bath), an entertainer's kitchen, wet bar, living room with fireplace and dining room. The lower level is self-contained with a separate entrance, 2 generously sized bedrooms, a kitchen, and its own laundry—an ideal mortgage helper! Car enthusiasts will love the oversized, heated double garage/workshop with plenty of storage. Key features also include all BRAND NEW appliances, NEW tankless hot water heater and high efficiency furnace. Outside, enjoy the covered deck and a partially fenced backyard with ample space to garden. Located close to schools, parks and shopping this home is perfect any family or savvy investor.

Built in 1979

### Essential Information

MLS® #	E4444410
Price	\$490,000
Bedrooms	5
Bathrooms	3.00
Full Baths	3
Square Footage	1,325



Acres	0.00
Year Built	1979
Type	Single Family
Sub-Type	Detached Single Family
Style	Bungalow
Status	Active

### Community Information

Address	3035 142 Avenue
Area	Edmonton
Subdivision	Hairsine
City	Edmonton
County	ALBERTA
Province	AB
Postal Code	T5Y 1J1

### Amenities

Amenities	On Street Parking, Deck, Hot Water Instant, Hot Water Natural Gas, See Remarks
Parking	Double Garage Detached, Heated, Insulated, Over Sized

### Interior

Interior Features	ensuite bathroom
Appliances	Dishwasher-Built-In, Hood Fan, Oven-Built-In, Oven-Microwave, Stove-Countertop Electric, Stove-Electric, Dryer-Two, Refrigerators-Two, Washers-Two
Heating	Forced Air-1, Natural Gas
Fireplace	Yes
Fireplaces	Tile Surround
Stories	2
Has Suite	Yes
Has Basement	Yes
Basement	Full, Finished

### Exterior

Exterior	Wood, Stucco
Exterior Features	Public Transportation, Schools, Shopping Nearby, See Remarks, Partially Fenced
Roof	Asphalt Shingles

Construction	Wood, Stucco
Foundation	Concrete Perimeter

**Additional Information**

Date Listed	June 25th, 2025
Days on Market	22
Zoning	Zone 35

DATA IS DEEMED RELIABLE BUT IS NOT GUARANTEED ACCURATE BY THE REALTORS® ASSOCIATION OF EDMONTON. COPYRIGHT 2025 BY THE REALTORS® ASSOCIATION OF EDMONTON. ALL RIGHTS RESERVED.Trademarks are owned or controlled by the Canadian Real Estate Association (CREA) and identify real estate professionals who are members of CREA (REALTOR®, REALTORS®) and/or the quality of services they provide (MLS®, Multiple Listing Service®)

Listing information last updated on July 17th, 2025 at 12:32pm MDT