

\$839,900 - 2365 Sparrow Crescent, Edmonton

MLS® #E4443621

\$839,900

4 Bedroom, 3.50 Bathroom, 2,846 sqft

Single Family on 0.00 Acres

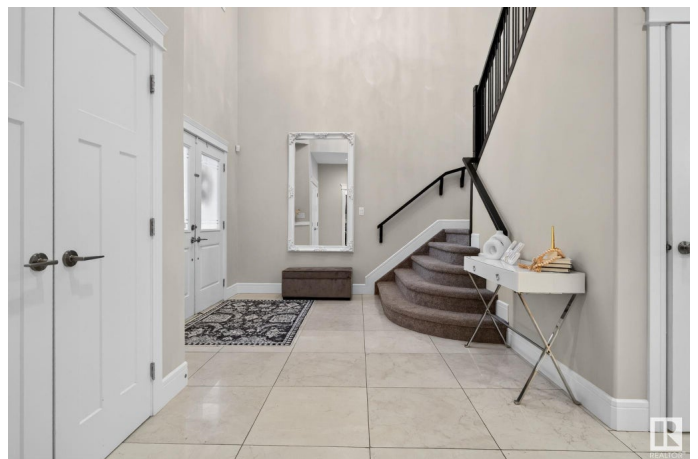
Starling, Edmonton, AB

Experience the perfect blend of luxury, functionality and nature in this beautifully designed 4 bedroom, 3.5 bath home, complete with a main floor den and a fully finished walkout basement. With 3 spacious bedrooms upstairs and an additional bedroom in the basement. High-end finishes are featured throughout, elevating every corner with style and quality. The upstairs features a large bonus room and the massive primary suite offers a true retreat, complete with an impressive ensuite that invites relaxation. Step outside to your private backyard oasis—this property backs onto a scenic walking trail and mature trees, providing both tranquility and privacy. With an open layout and thoughtful design, there's plenty of room to gather, work, and unwind in comfort. Ideally located near scenic trails, parks, schools, and convenient shopping, this home offers the best of both nature and neighborhood living.

Built in 2015

Essential Information

MLS® #	E4443621
Price	\$839,900
Bedrooms	4
Bathrooms	3.50
Full Baths	3



Half Baths	1
Square Footage	2,846
Acres	0.00
Year Built	2015
Type	Single Family
Sub-Type	Detached Single Family
Style	2 Storey
Status	Active

Community Information

Address	2365 Sparrow Crescent
Area	Edmonton
Subdivision	Starling
City	Edmonton
County	ALBERTA
Province	AB
Postal Code	T5S 0G7

Amenities

Amenities	Closet Organizers, Deck, Patio
Parking	Double Garage Attached, Front Drive Access

Interior

Interior Features	ensuite bathroom
Appliances	Dishwasher-Built-In, Dryer, Garage Control, Garage Opener, Hood Fan, Oven-Built-In, Oven-Microwave, Refrigerator, Stove-Gas, Washer
Heating	Forced Air-1, Natural Gas
Stories	3
Has Basement	Yes
Basement	Full, Finished

Exterior

Exterior	Wood, Stone, Vinyl
Exterior Features	Backs Onto Park/Trees, Fenced, Golf Nearby, Landscaped, Level Land, No Back Lane, Picnic Area, Shopping Nearby, See Remarks
Roof	Asphalt Shingles
Construction	Wood, Stone, Vinyl
Foundation	Concrete Perimeter

Additional Information

Date Listed June 20th, 2025

Days on Market 23

Zoning Zone 59

DATA IS DEEMED RELIABLE BUT IS NOT GUARANTEED ACCURATE BY THE REALTORS® ASSOCIATION OF EDMONTON. COPYRIGHT 2025 BY THE REALTORS® ASSOCIATION OF EDMONTON. ALL RIGHTS RESERVED. Trademarks are owned or controlled by the Canadian Real Estate Association (CREA) and identify real estate professionals who are members of CREA (REALTOR®, REALTORS®) and/or the quality of services they provide (MLS®, Multiple Listing Service®)

Listing information last updated on July 13th, 2025 at 3:02am MDT