

\$210,000 - 10633 31 Avenue, Edmonton

MLS® #E4442524

\$210,000

1 Bedroom, 0.50 Bathroom, 915 sqft

Condo / Townhouse on 0.00 Acres

Steinhauer, Edmonton, AB

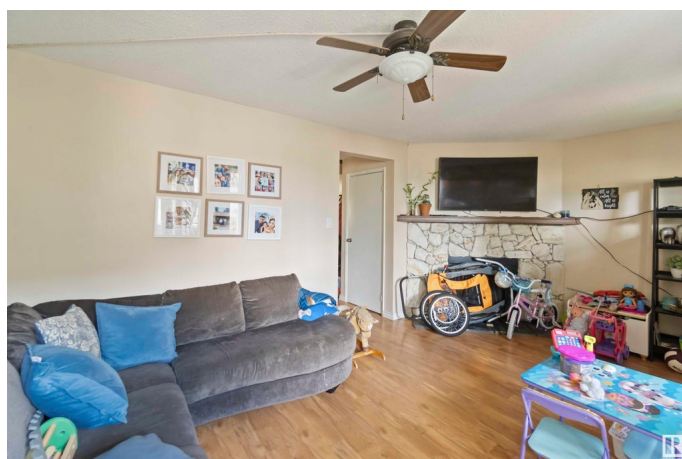
Discover this inviting 3-bed, 2-storey townhome in Commonwealth Village, Steinhauer, perfect for first-time buyers, families, or investors ready to add their personal touch. Steps from Steinhauer Park's playground, sports fields, and outdoor rink, it's ideal for active lifestyles. Enjoy proximity to Steinhauer Elementary, Southgate Centre's 165+ stores, and Century Park LRT for seamless downtown access. Ermineskin Community League offers vibrant events and fitness programs nearby. The cozy living room boasts laminate flooring, a corner fireplace with stone facing, and large windows overlooking the backyard. The eat-in kitchen features white cabinetry and appliances, ready for your modern upgrades. Upstairs, a spacious master, two bedrooms, and a 4-piece bath await. The partially finished basement, with ample storage and laundry, offers endless potential for customization. This end unit, next to a green belt, has a fenced backyard with deck and two parking stalls. Close to Calgary Trail and Anthony Henday

Built in 1978

Essential Information

MLS® # E4442524

Price \$210,000



Bedrooms	1
Bathrooms	0.50
Half Baths	1
Square Footage	915
Acres	0.00
Year Built	1978
Type	Condo / Townhouse
Sub-Type	Townhouse
Style	2 Storey
Status	Active

Community Information

Address	10633 31 Avenue
Area	Edmonton
Subdivision	Steinhauer
City	Edmonton
County	ALBERTA
Province	AB
Postal Code	T6J 4N4

Amenities

Amenities	Detectors Smoke, Parking-Plug-Ins, Parking-Visitor
Parking	2 Outdoor Stalls

Interior

Appliances	Dishwasher-Built-In, Dryer, Refrigerator, Stove-Electric, Washer
Heating	Forced Air-1, Natural Gas
Stories	2
Has Basement	Yes
Basement	Full, Partially Finished

Exterior

Exterior	Wood
Exterior Features	Backs Onto Park/Trees, Fenced, Park/Reserve, Public Transportation, Schools, Shopping Nearby
Roof	Asphalt Shingles
Construction	Wood
Foundation	Concrete Perimeter

Additional Information

Date Listed	June 14th, 2025
Days on Market	2
Zoning	Zone 16
Condo Fee	\$356

DATA IS DEEMED RELIABLE BUT IS NOT GUARANTEED ACCURATE BY THE REALTORS® ASSOCIATION OF EDMONTON. COPYRIGHT 2025 BY THE REALTORS® ASSOCIATION OF EDMONTON. ALL RIGHTS RESERVED. Trademarks are owned or controlled by the Canadian Real Estate Association (CREA) and identify real estate professionals who are members of CREA (REALTOR®, REALTORS®) and/or the quality of services they provide (MLS®, Multiple Listing Service®)

Listing information last updated on June 16th, 2025 at 2:32am MDT