

\$560,000 - 3632 8 Avenue, Edmonton

MLS® #E4441673

\$560,000

4 Bedroom, 3.50 Bathroom, 1,507 sqft

Single Family on 0.00 Acres

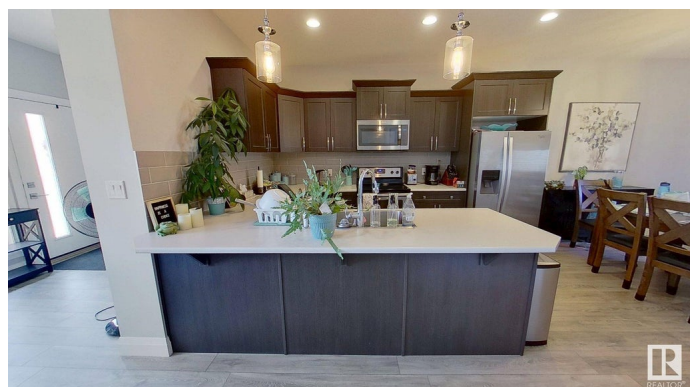
Charlesworth, Edmonton, AB

This is a beautiful home with 2 suites. A 3 bedroom with an upper floor and a basement suite with 9' ceilings. The main floor has a walk in pantry and a spacious dining room. Both suites have their own laundry facilities. The upstairs has a master bedroom with an ensuite and walk in closet. There is a double garage with a good size driveway. The is additional parking in the front. The house is fully fenced and landscaped. Around the corner from the house there is a large playground with gardens and a frisbee golf course. There are also a lot of walking or biking trails nearby. The house is located close to all the shopping

Built in 2016

Essential Information

MLS® #	E4441673
Price	\$560,000
Bedrooms	4
Bathrooms	3.50
Full Baths	3
Half Baths	1
Square Footage	1,507
Acres	0.00
Year Built	2016
Type	Single Family



Sub-Type	Detached Single Family
Style	2 Storey
Status	Active

Community Information

Address	3632 8 Avenue
Area	Edmonton
Subdivision	Charlesworth
City	Edmonton
County	ALBERTA
Province	AB
Postal Code	T6X 2G6

Amenities

Amenities	Carbon Monoxide Detectors, Ceiling 9 ft., Deck, Detectors Smoke, Front Porch, Hot Water Electric, Hot Water Natural Gas, No Animal Home, No Smoking Home, Smart/Program. Thermostat, Television Connection, Vinyl Windows
Parking	Double Garage Detached

Interior

Interior Features	ensuite bathroom
Appliances	Dishwasher-Built-In, Dryer, Garage Opener, Humidifier-Power(Furnace), Microwave Hood Fan, Oven-Microwave, Refrigerator, Stove-Electric, Washer, Window Coverings
Heating	Forced Air-1, Forced Air-2, Natural Gas
Stories	3
Has Suite	Yes
Has Basement	Yes
Basement	Full, Finished

Exterior

Exterior	Wood, Vinyl
Exterior Features	Back Lane, Fenced, Landscaped, Playground Nearby, Shopping Nearby
Roof	Asphalt Shingles
Construction	Wood, Vinyl
Foundation	Concrete Perimeter

Additional Information

Date Listed	June 11th, 2025
-------------	-----------------

Days on Market	5
Zoning	Zone 53
HOA Fees	210
HOA Fees Freq.	Annually

DATA IS DEEMED RELIABLE BUT IS NOT GUARANTEED ACCURATE BY THE REALTORS® ASSOCIATION OF EDMONTON. COPYRIGHT 2025 BY THE REALTORS® ASSOCIATION OF EDMONTON. ALL RIGHTS RESERVED. Trademarks are owned or controlled by the Canadian Real Estate Association (CREA) and identify real estate professionals who are members of CREA (REALTOR®, REALTORS®) and/or the quality of services they provide (MLS®, Multiple Listing Service®)

Listing information last updated on June 16th, 2025 at 2:48pm MDT