

\$434,000 - 15912 10 Avenue, Edmonton

MLS® #E4441660

\$434,000

3 Bedroom, 2.50 Bathroom, 1,527 sqft

Single Family on 0.00 Acres

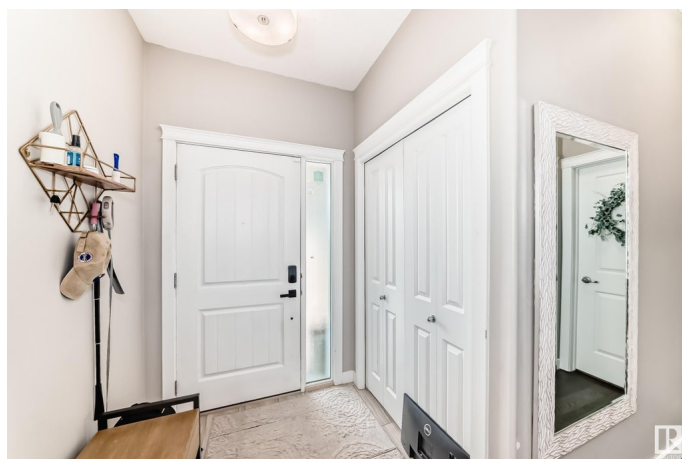
Glenridding Heights, Edmonton, AB

Welcome to this fully upgraded half duplex in the desirable neighbourhood of Glenridding Heights! Main floor features open concept with wall to wall engineered hardwood flooring, stunning kitchen with granite countertops, large walk-through pantry, stainless steel appliances, raised eating bar, bright dining area, spacious living room with coffered ceilings and natural gas fireplace + 2 pce bath. Upper level features 3 perfect sized bedrooms all with black-out blinds, master with 4 pce en-suite, walk in closet & convenience of upstairs laundry! This home also includes Air Conditioning! Relax & entertain on back deck with privacy wall in a fully fenced & professionally landscaped yard! Close to Anthony Henday, Windermere Shopping, Schools, Parks, Trails and Public Transportation.

Built in 2014

Essential Information

MLS® #	E4441660
Price	\$434,000
Bedrooms	3
Bathrooms	2.50
Full Baths	2
Half Baths	1
Square Footage	1,527



Acres	0.00
Year Built	2014
Type	Single Family
Sub-Type	Half Duplex
Style	2 Storey
Status	Active

Community Information

Address	15912 10 Avenue
Area	Edmonton
Subdivision	Glenridding Heights
City	Edmonton
County	ALBERTA
Province	AB
Postal Code	T6W 2H2

Amenities

Amenities	Air Conditioner, Ceiling 9 ft., See Remarks
Parking	Single Garage Attached

Interior

Interior Features	ensuite bathroom
Appliances	Air Conditioning-Central, Dishwasher-Built-In, Dryer, Garage Opener, Hood Fan, Oven-Microwave, Refrigerator, Stove-Electric, Washer, Window Coverings
Heating	Forced Air-2, Natural Gas
Fireplace	Yes
Fireplaces	Tile Surround
Stories	2
Has Basement	Yes
Basement	Full, Unfinished

Exterior

Exterior	Wood, Stone, Vinyl
Exterior Features	Fenced, Golf Nearby, Landscaped, Playground Nearby, Public Transportation, Schools, Shopping Nearby, See Remarks
Roof	Asphalt Shingles
Construction	Wood, Stone, Vinyl
Foundation	Concrete Perimeter

Additional Information

Date Listed June 11th, 2025
Days on Market 36
Zoning Zone 56

DATA IS DEEMED RELIABLE BUT IS NOT GUARANTEED ACCURATE BY THE REALTORS® ASSOCIATION OF EDMONTON. COPYRIGHT 2025 BY THE REALTORS® ASSOCIATION OF EDMONTON. ALL RIGHTS RESERVED.Trademarks are owned or controlled by the Canadian Real Estate Association (CREA) and identify real estate professionals who are members of CREA (REALTOR®, REALTORS®) and/or the quality of services they provide (MLS®, Multiple Listing Service®)
Listing information last updated on July 16th, 2025 at 10:47pm MDT