

# \$4,799,990 - 52419 Range Road 12, Rural Parkland County

MLS® #E4441582

**\$4,799,990**

0 Bedroom, 0.00 Bathroom,  
Rural on 72.70 Acres

None, Rural Parkland County, AB

PRIME DEVELOPMENT OPPORTUNITY! 73 Acres of land just West of The Brickyard West Stony Plain! An exceptional opportunity to acquire a strategically located parcel of land just south of Highway 16a, ideally positioned IN the fast-growing Town of Stony Plain. Included in the Area Structure Plan for the Town of Stony Plain, dated August of 2022.

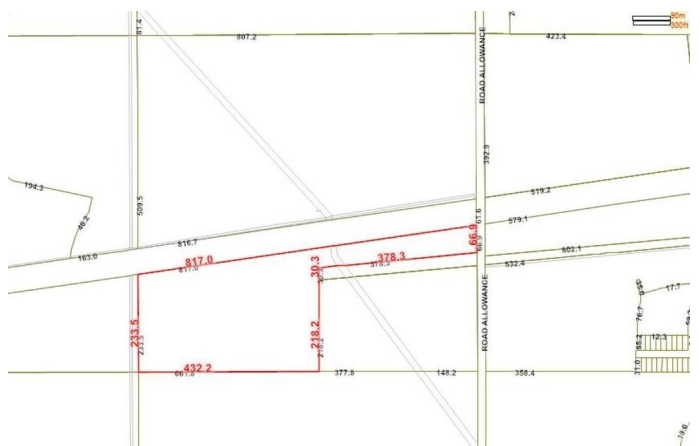
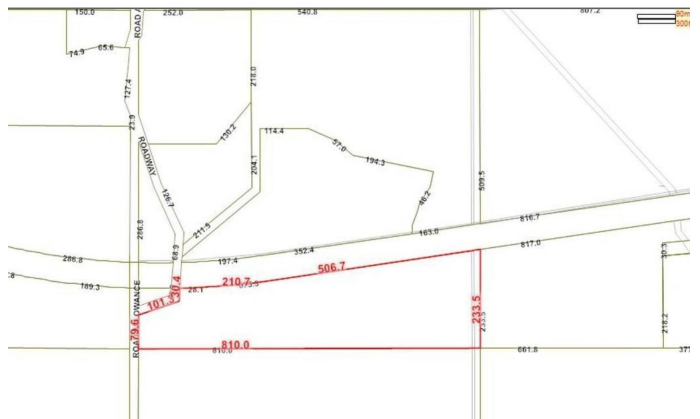


## Essential Information

MLS® #	E4441582
Price	\$4,799,990
Bathrooms	0.00
Acres	72.70
Type	Rural
Sub-Type	Vacant Lot/Land
Status	Active

## Community Information

Address	52419 Range Road 12
Area	Rural Parkland County
Subdivision	None
City	Rural Parkland County
County	ALBERTA
Province	AB
Postal Code	T7Z 2S1



## Exterior

Exterior Features See Remarks

## Additional Information

Date Listed June 10th, 2025

Days on Market 51

Zoning Zone 91

DATA IS DEEMED RELIABLE BUT IS NOT GUARANTEED ACCURATE BY THE REALTORS® ASSOCIATION OF EDMONTON. COPYRIGHT 2025 BY THE REALTORS® ASSOCIATION OF EDMONTON. ALL RIGHTS RESERVED. Trademarks are owned or controlled by the Canadian Real Estate Association (CREA) and identify real estate professionals who are members of CREA (REALTOR®, REALTORS®) and/or the quality of services they provide (MLS®, Multiple Listing Service®)

Listing information last updated on July 31st, 2025 at 11:32am MDT