

## \$549,900 - 27 Deer Park Boulevard, Spruce Grove

MLS® #E4436292

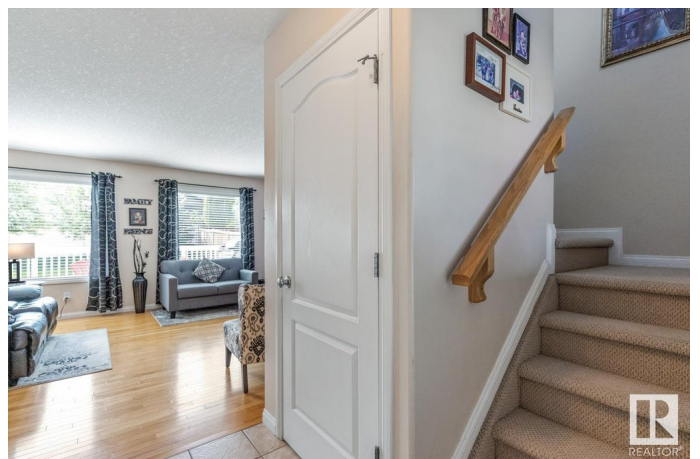
**\$549,900**

4 Bedroom, 3.50 Bathroom, 1,585 sqft

Single Family on 0.00 Acres

Deer Park\_SPGR, Spruce Grove, AB

Welcome home to the family friendly community of Deer Park! This IMMACUATELY maintained air conditioned home has everything that is required in the growing family. From the over sized 24x24 garage to the larger apron to allow the camper to be loaded for weekends away. When you enter the welcoming & open main floor plan greets you with warmth & light. You would be hard pressed to find a better maintained home. All the big items have been addressed - this home exudes pride of ownership. The main floor welcomes the family gatherings with the open kitchen, dining & living area. Upstairs you will find a large primary suite with 4 piece ensuite & two additional bedrooms. The basement is ready for the teenagers with a large family area, additional bedroom & three piece bath. The back yard is south facing with a nice sized deck & fully fenced for the dogs. Many a memory has been made in this home & now its simply waiting for you to make new ones. Close to shopping golf & easy access to both hwy 16 & yellowhead.



Built in 2003

### Essential Information

MLS® # E4436292

Price \$549,900

|                |                        |
|----------------|------------------------|
| Bedrooms       | 4                      |
| Bathrooms      | 3.50                   |
| Full Baths     | 3                      |
| Half Baths     | 1                      |
| Square Footage | 1,585                  |
| Acres          | 0.00                   |
| Year Built     | 2003                   |
| Type           | Single Family          |
| Sub-Type       | Detached Single Family |
| Style          | 2 Storey               |
| Status         | Active                 |

### Community Information

|             |                        |
|-------------|------------------------|
| Address     | 27 Deer Park Boulevard |
| Area        | Spruce Grove           |
| Subdivision | Deer Park_SPGR         |
| City        | Spruce Grove           |
| County      | ALBERTA                |
| Province    | AB                     |
| Postal Code | T7X 4M2                |

### Amenities

|           |  |
|-----------|--|
| Amenities | Deck, No Animal Home, No Smoking Home, See Remarks |
| Parking   | Double Garage Attached, RV Parking                 |

### Interior

|                   |   |
|-------------------|---|
| Interior Features | ensuite bathroom  |
| Appliances        | Air Conditioning-Central, Dishwasher-Built-In, Dryer, Garage Control, Garage Opener, Hood Fan, Refrigerator, Stove-Electric, Washer |
| Heating           | Forced Air-1, Natural Gas   |
| Stories           | 3   |
| Has Basement      | Yes   |
| Basement          | Full, Finished  |

### Exterior

|                   |  |
|-------------------|--|
| Exterior          | Wood, Vinyl  |
| Exterior Features | Golf Nearby, Landscaped, No Back Lane, Playground Nearby, Public Swimming Pool, Public Transportation, Schools, Shopping Nearby, See Remarks |

|              |                    |
|--------------|--------------------|
| Roof         | Asphalt Shingles   |
| Construction | Wood, Vinyl        |
| Foundation   | Concrete Perimeter |

**Additional Information**

|                |                |
|----------------|----------------|
| Date Listed    | May 14th, 2025 |
| Days on Market | 34             |
| Zoning         | Zone 91        |

DATA IS DEEMED RELIABLE BUT IS NOT GUARANTEED ACCURATE BY THE REALTORS® ASSOCIATION OF EDMONTON. COPYRIGHT 2025 BY THE REALTORS® ASSOCIATION OF EDMONTON. ALL RIGHTS RESERVED.Trademarks are owned or controlled by the Canadian Real Estate Association (CREA) and identify real estate professionals who are members of CREA (REALTOR®, REALTORS®) and/or the quality of services they provide (MLS®, Multiple Listing Service®)

Listing information last updated on June 17th, 2025 at 6:02pm MDT