

\$174,900 - 1504 10135 Saskatchewan Drive, Edmonton

MLS® #E4435063

\$174,900

1 Bedroom, 1.00 Bathroom, 734 sqft
Condo / Townhouse on 0.00 Acres

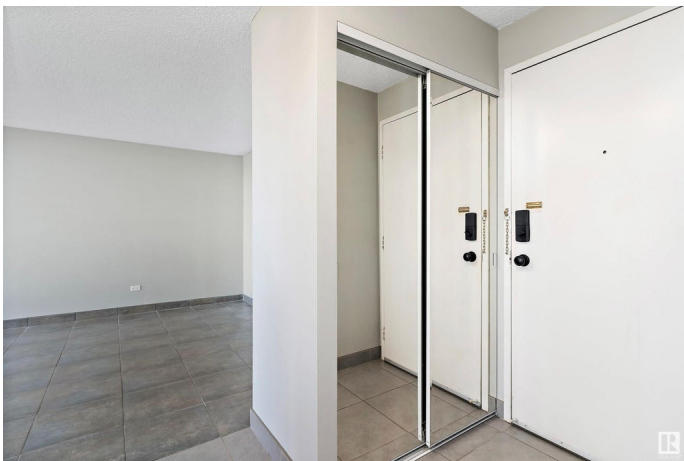
Strathcona, Edmonton, AB

The greatest views the city has to offer! This 15th-floor condo boasts panoramic views of the entire River Valley and Downtown. Perfectly situated on Saskatchewan Drive, Cranleigh Tower has it all—just steps from ravine trails, parks, recreation centers, and the shopping, restaurants, and nightlife of Whyte Avenue. Plus, enjoy access to an indoor pool, sauna, and exercise room! This unit is thoughtfully designed for easy, move-in-ready living. The updated kitchen features ample storage and counter space, stainless steel appliances, and opens to the dining area and spacious living room with floor-to-ceiling windows. The primary suite offers generous space, a large window, and an oversized closet. A full 4-piece bathroom and a sizeable storage room complete the layout. An underground parking stall is included. Exceptional value—must be seen!

Built in 1973

Essential Information

MLS® #	E4435063
Price	\$174,900
Bedrooms	1
Bathrooms	1.00
Full Baths	1
Square Footage	734



Acres	0.00
Year Built	1973
Type	Condo / Townhouse
Sub-Type	Apartment High Rise
Style	Single Level Apartment
Status	Active

Community Information

Address	1504 10135 Saskatchewan Drive
Area	Edmonton
Subdivision	Strathcona
City	Edmonton
County	ALBERTA
Province	AB
Postal Code	T6E 4Y9

Amenities

Amenities	Exercise Room, Intercom, Parking-Visitor, Pool-Indoor, Sauna; Swirlpool; Steam, Secured Parking, Security Door, Storage-In-Suite, See Remarks
Parking Spaces	1
Parking	Underground
Has Pool	Yes

Interior

Appliances	Dishwasher-Built-In, Microwave Hood Fan, Refrigerator, Stove-Electric, Window Coverings
Heating	Baseboard, Water
# of Stories	22
Stories	1
Has Basement	Yes
Basement	None, No Basement

Exterior

Exterior	Concrete
Exterior Features	Golf Nearby, Picnic Area, Playground Nearby, Public Swimming Pool, Public Transportation, Ravine View, River Valley View, River View, Schools, Shopping Nearby, View City, View Downtown
Roof	Tar & Gravel
Construction	Concrete

Foundation Concrete Perimeter

Additional Information

Date Listed May 7th, 2025
Days on Market 2
Zoning Zone 15
Condo Fee \$519

DATA IS DEEMED RELIABLE BUT IS NOT GUARANTEED ACCURATE BY THE REALTORS® ASSOCIATION OF EDMONTON. COPYRIGHT 2025 BY THE REALTORS® ASSOCIATION OF EDMONTON. ALL RIGHTS RESERVED.Trademarks are owned or controlled by the Canadian Real Estate Association (CREA) and identify real estate professionals who are members of CREA (REALTOR®, REALTORS®) and/or the quality of services they provide (MLS®, Multiple Listing Service®)
Listing information last updated on May 9th, 2025 at 12:47pm MDT