

\$574,900 - 518 Adams Way, Edmonton

MLS® #E4435013

\$574,900

4 Bedroom, 2.50 Bathroom, 1,922 sqft

Single Family on 0.00 Acres

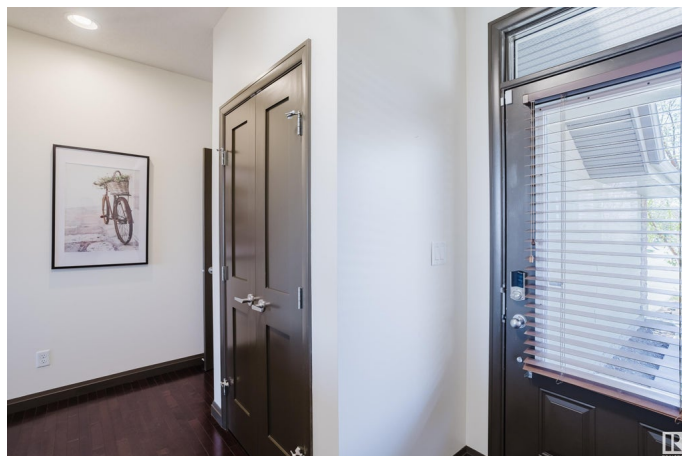
Ambleside, Edmonton, AB

Step into quality with this beautiful Jayman-built home nestled in the heart of Ambleside. With a generous total of 2,815 sq ft of living space, this property blends spacious design with everyday comfort. The main floor features an open-concept layout with a granite island kitchen, cozy gas fireplace, and ample space for entertaining. Upstairs, enjoy a bonus room, three generous bedrooms including a primary suite with walk-in closet and full ensuite. The basement offers a den, bedroom, full bath, and a built-in sauna. Outside, relax on the private deck in your fenced backyard and take advantage of the double attached garage. Located on a quiet street near top-rated schools, walking trails, and shopping at both Currents of Windermere and Windermere Crossing, this home delivers an unbeatable lifestyle in one of Edmonton's most sought-after neighbourhoods.

Built in 2009

Essential Information

MLS® #	E4435013
Price	\$574,900
Bedrooms	4
Bathrooms	2.50
Full Baths	2
Half Baths	1



Square Footage	1,922
Acres	0.00
Year Built	2009
Type	Single Family
Sub-Type	Detached Single Family
Style	2 Storey
Status	Active

Community Information

Address	518 Adams Way
Area	Edmonton
Subdivision	Ambleside
City	Edmonton
County	ALBERTA
Province	AB
Postal Code	T6W 0H1

Amenities

Amenities	Deck, No Smoking Home, See Remarks
Parking Spaces	4
Parking	Double Garage Detached

Interior

Interior Features	ensuite bathroom
Appliances	Dishwasher-Built-In, Dryer, Microwave Hood Fan, Refrigerator, Stove-Electric, Washer
Heating	Forced Air-1, Natural Gas
Fireplace	Yes
Fireplaces	Glass Door, Mantel, Tile Surround
Stories	2
Has Basement	Yes
Basement	Full, Finished

Exterior

Exterior	Wood, Vinyl
Exterior Features	Fenced, Shopping Nearby, See Remarks
Roof	Asphalt Shingles
Construction	Wood, Vinyl
Foundation	Concrete Perimeter

Additional Information

Date Listed	May 7th, 2025
Days on Market	2
Zoning	Zone 56
HOA Fees	100
HOA Fees Freq.	Annually

DATA IS DEEMED RELIABLE BUT IS NOT GUARANTEED ACCURATE BY THE REALTORS® ASSOCIATION OF EDMONTON. COPYRIGHT 2025 BY THE REALTORS® ASSOCIATION OF EDMONTON. ALL RIGHTS RESERVED.Trademarks are owned or controlled by the Canadian Real Estate Association (CREA) and identify real estate professionals who are members of CREA (REALTOR®, REALTORS®) and/or the quality of services they provide (MLS®, Multiple Listing Service®)

Listing information last updated on May 9th, 2025 at 12:47pm MDT