

\$465,000 - 12 Ivy Crescent, Sherwood Park

MLS® #E4430712

\$465,000

5 Bedroom, 2.50 Bathroom, 1,136 sqft

Single Family on 0.00 Acres

Maplewood (Sherwood Park), Sherwood Park,
AB

WELL CARED FOR HOME,WITH HUGE
BACKYARD,LIVING ROOM/KITCHEN NEW
PAINT /FLOORING LAST YEAR,GREAT
LOCATION.

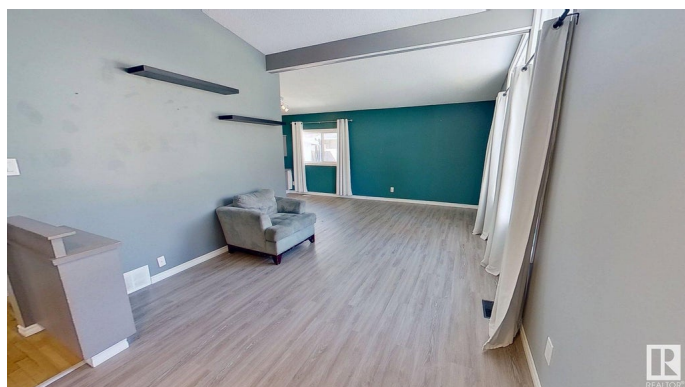
Built in 1970

Essential Information

MLS® #	E4430712
Price	\$465,000
Bedrooms	5
Bathrooms	2.50
Full Baths	2
Half Baths	1
Square Footage	1,136
Acres	0.00
Year Built	1970
Type	Single Family
Sub-Type	Detached Single Family
Style	Bungalow
Status	Active

Community Information

Address	12 Ivy Crescent
Area	Sherwood Park
Subdivision	Maplewood (Sherwood Park)
City	Sherwood Park



County	ALBERTA
Province	AB
Postal Code	T8A 1W4

Amenities

Amenities	Detectors Smoke, Fire Pit, Gazebo, Greenhouse, Hot Water Electric, Insulation-Upgraded, Low Flw/Dual Flush Toilet, No Smoking Home, Parking-Extra, Parking-Plug-Ins, R.V. Storage
Parking Spaces	4
Parking	Double Garage Detached

Interior

Interior Features	ensuite bathroom
Appliances	None
Heating	Forced Air-1, Natural Gas
Stories	2
Has Basement	Yes
Basement	Full, Finished

Exterior

Exterior	Wood, Stucco
Exterior Features	Airport Nearby, Fenced, Fruit Trees/Shrubs, Landscaped, Paved Lane, Playground Nearby, Public Transportation, Schools, Shopping Nearby, Vegetable Garden
Roof	Asphalt Shingles
Construction	Wood, Stucco
Foundation	Concrete Perimeter

Additional Information

Date Listed	April 14th, 2025
Days on Market	110
Zoning	Zone 25

DATA IS DEEMED RELIABLE BUT IS NOT GUARANTEED ACCURATE BY THE REALTORS® ASSOCIATION OF EDMONTON. COPYRIGHT 2025 BY THE REALTORS® ASSOCIATION OF EDMONTON. ALL RIGHTS RESERVED.Trademarks are owned or controlled by the Canadian Real Estate Association (CREA) and identify real estate professionals who are members of CREA (REALTOR®, REALTORS®) and/or the quality of services they provide (MLS®, Multiple Listing Service®)

Listing information last updated on August 2nd, 2025 at 3:02pm MDT