

\$625,000 - 3947 5 Avenue, Edmonton

MLS® #E4430119

\$625,000

3 Bedroom, 2.50 Bathroom, 2,112 sqft
Single Family on 0.00 Acres

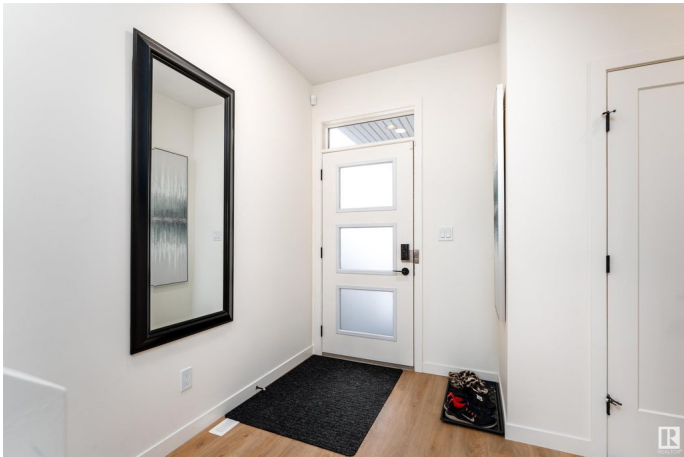
Charlesworth, Edmonton, AB

Stylish 3 bed, 2.5 bath 2-storey in family-friendly Charlesworth! This home features a bright living room with soaring ceilings, a stunning chef's kitchen with gold fixtures, stainless steel appliances, quartz countertops, a spacious pantry and lots of cabinet space. A 2pc bath completes the main level. Upstairs, you'll find 3 bedrooms, a laundry room, flex/bonus room and a 4-pc bath. The sunny primary suite boasts a walk-in closet and luxurious 5-piece ensuite with double sinks and a soaker tub. The large basement is ready for your creative touch—home gym, theatre, or extra living space! Enjoy backing onto a green space for added privacy and green views. Close disc golf course, schools, shopping, parks, and quick access to the Anthony Henday. A perfect blend of style, space, and location!

Built in 2022

Essential Information

| | |
|----------------|-----------|
| MLS® # | E4430119 |
| Price | \$625,000 |
| Bedrooms | 3 |
| Bathrooms | 2.50 |
| Full Baths | 2 |
| Half Baths | 1 |
| Square Footage | 2,112 |



| | |
|------------|------------------------|
| Acres | 0.00 |
| Year Built | 2022 |
| Type | Single Family |
| Sub-Type | Detached Single Family |
| Style | 2 Storey |
| Status | Active |

Community Information

| | |
|-------------|---------------|
| Address | 3947 5 Avenue |
| Area | Edmonton |
| Subdivision | Charlesworth |
| City | Edmonton |
| County | ALBERTA |
| Province | AB |
| Postal Code | T6X 2X8 |

Amenities

| | |
|----------------|--|
| Amenities | Detectors Smoke, No Animal Home, No Smoking Home |
| Parking Spaces | 4 |
| Parking | Double Garage Attached |

Interior

| | |
|-------------------|---|
| Interior Features | ensuite bathroom |
| Appliances | Dishwasher-Built-In, Dryer, Garage Control, Garage Opener, Hood Fan, Refrigerator, Stove-Electric, Washer |
| Heating | Forced Air-2, Natural Gas |
| Fireplace | Yes |
| Fireplaces | Tile Surround |
| Stories | 2 |
| Has Basement | Yes |
| Basement | Full, Unfinished |

Exterior

| | |
|-------------------|--|
| Exterior | Wood, Vinyl |
| Exterior Features | Airport Nearby, Backs Onto Park/Trees, Fenced, Flat Site, Golf Nearby, Landscaped, No Back Lane, Park/Reserve, Picnic Area, Playground Nearby, Public Swimming Pool, Public Transportation, Schools, Shopping Nearby |
| Roof | Asphalt Shingles |

| | |
|--------------|--------------------|
| Construction | Wood, Vinyl |
| Foundation | Concrete Perimeter |

Additional Information

| | |
|----------------|------------------|
| Date Listed | April 10th, 2025 |
| Days on Market | 22 |
| Zoning | Zone 53 |
| HOA Fees | 200 |
| HOA Fees Freq. | Annually |

DATA IS DEEMED RELIABLE BUT IS NOT GUARANTEED ACCURATE BY THE REALTORS® ASSOCIATION OF EDMONTON. COPYRIGHT 2025 BY THE REALTORS® ASSOCIATION OF EDMONTON. ALL RIGHTS RESERVED.Trademarks are owned or controlled by the Canadian Real Estate Association (CREA) and identify real estate professionals who are members of CREA (REALTOR®, REALTORS®) and/or the quality of services they provide (MLS®, Multiple Listing Service®)

Listing information last updated on May 2nd, 2025 at 10:02am MDT