

# \$139,900 - 320 2508 50 Street, Edmonton

MLS® #E4425427

**\$139,900**

1 Bedroom, 1.00 Bathroom, 670 sqft

Condo / Townhouse on 0.00 Acres

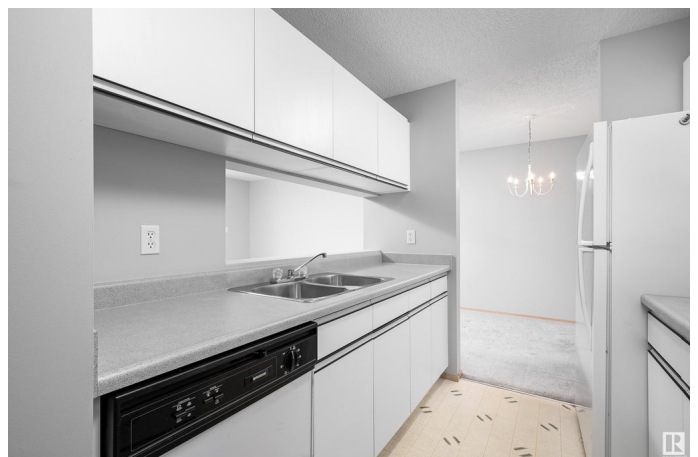
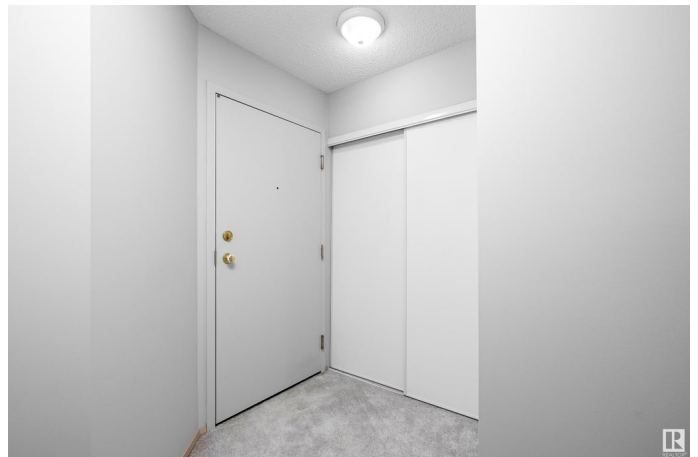
Mill Woods Town Centre, Edmonton, AB

Welcome to an immaculately kept one-bdrm, one-bthrm condo that is truly move-in ready. This sparkling clean unit, featuring fresh paint throughout, professionally cleaned carpets, brand new stove. Cook up a storm in your fully-equipped kitchen, perfect for culinary enthusiasts. Benefit from spacious closets in both the entryway + bedroom, providing plenty of room for all your belongings. The condo is flooded with natural light, creating a bright + inviting atmosphere. Situated within walking distance to shopping centres, restaurants, + public transportation. Enjoy the peace + privacy of a corner unit with no floors above. The unit includes one assigned parking stall. Whether you're a first-time homebuyer, a parent looking for a safe place for your child, or an investor seeking a promising property, this unit offers everything you need. With its excellent location, modern amenities, + appealing features, you truly can't go wrong. See for yourself the potential this condo holds!

Built in 1993

## Essential Information

MLS® #	E4425427
Price	\$139,900
Bedrooms	1
Bathrooms	1.00



Full Baths	1
Square Footage	670
Acres	0.00
Year Built	1993
Type	Condo / Townhouse
Sub-Type	Lowrise Apartment
Style	Single Level Apartment
Status	Active

### **Community Information**

Address	320 2508 50 Street
Area	Edmonton
Subdivision	Mill Woods Town Centre
City	Edmonton
County	ALBERTA
Province	AB
Postal Code	T6L 6X9

### **Amenities**

Amenities	No Animal Home, No Smoking Home, Parking-Visitor
Parking	Stall

### **Interior**

Appliances	Dishwasher-Built-In, Dryer, Refrigerator, Stove-Electric, Washer
Heating	Baseboard, Hot Water, Natural Gas
# of Stories	4
Stories	1
Has Basement	Yes
Basement	None, No Basement

### **Exterior**

Exterior	Wood, Stucco
Exterior Features	Airport Nearby, Fenced, No Through Road, Playground Nearby, Public Transportation, Schools, Shopping Nearby
Roof	Asphalt Shingles
Construction	Wood, Stucco
Foundation	Concrete Perimeter

### **School Information**

Elementary	Weinlos School
Middle	Kate Chegwin School
High	W.P. Wagner School

### **Additional Information**

Date Listed	March 13th, 2025
Days on Market	95
Zoning	Zone 29
Condo Fee	\$343

DATA IS DEEMED RELIABLE BUT IS NOT GUARANTEED ACCURATE BY THE REALTORS® ASSOCIATION OF EDMONTON. COPYRIGHT 2025 BY THE REALTORS® ASSOCIATION OF EDMONTON. ALL RIGHTS RESERVED. Trademarks are owned or controlled by the Canadian Real Estate Association (CREA) and identify real estate professionals who are members of CREA (REALTOR®, REALTORS®) and/or the quality of services they provide (MLS®, Multiple Listing Service®)

Listing information last updated on June 16th, 2025 at 2:32pm MDT